

# Weekly Board Notes

June 9, 2023

## **Becky Miller Named Incoming Principal at Atlas Elementary School**

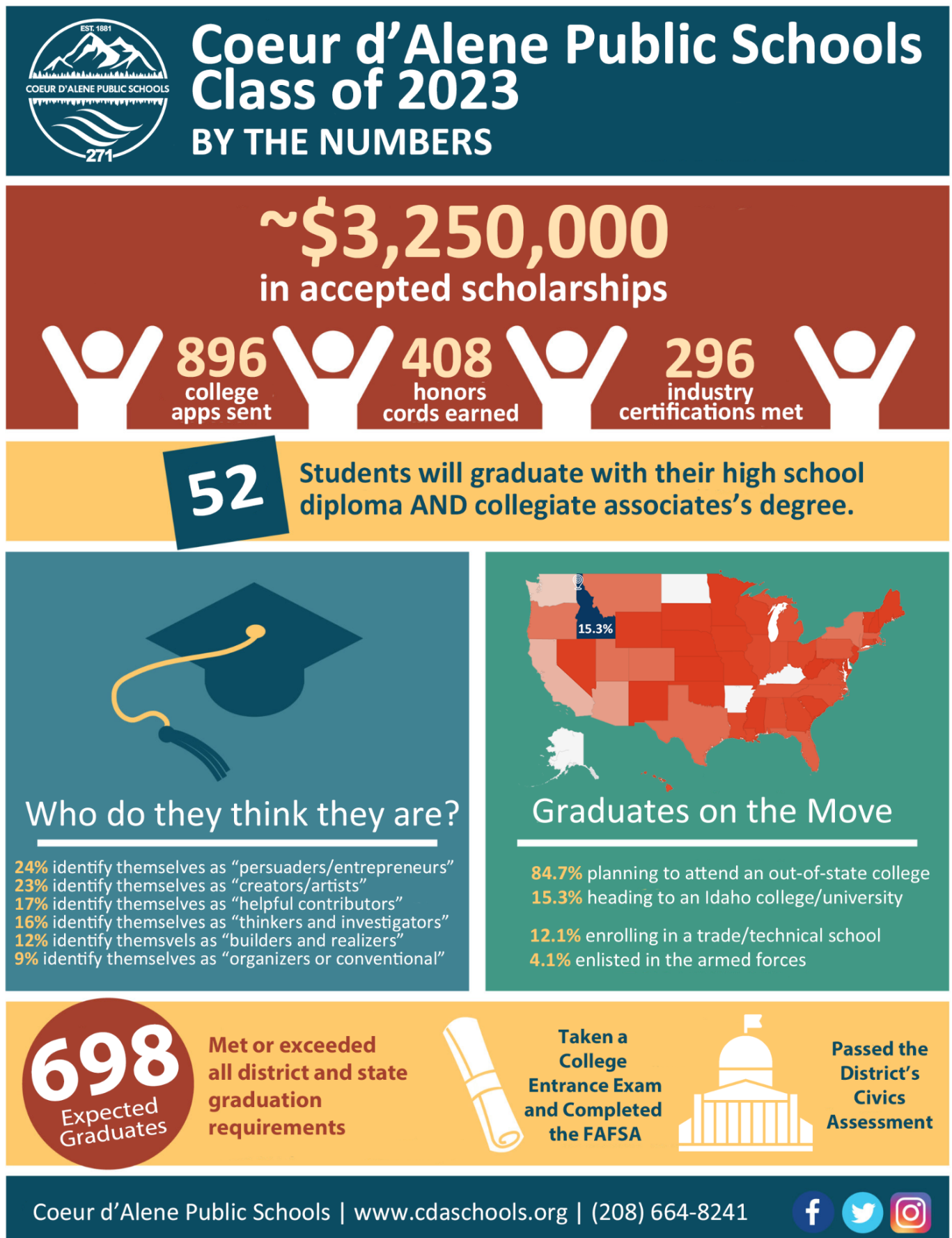
After reviewing applications and completing interviews this week for the Atlas Elementary School principal position, we are pleased to announce that 25-year district veteran Becky Miller will lead the school for the 2023-2024 school year. The following [press release](#) was sent Thursday, and she plans to meet soon with current principal Carrie Shinkle, who is returning to Montana to be a principal in Helena. She will also be with the staff next week as they complete their school year.



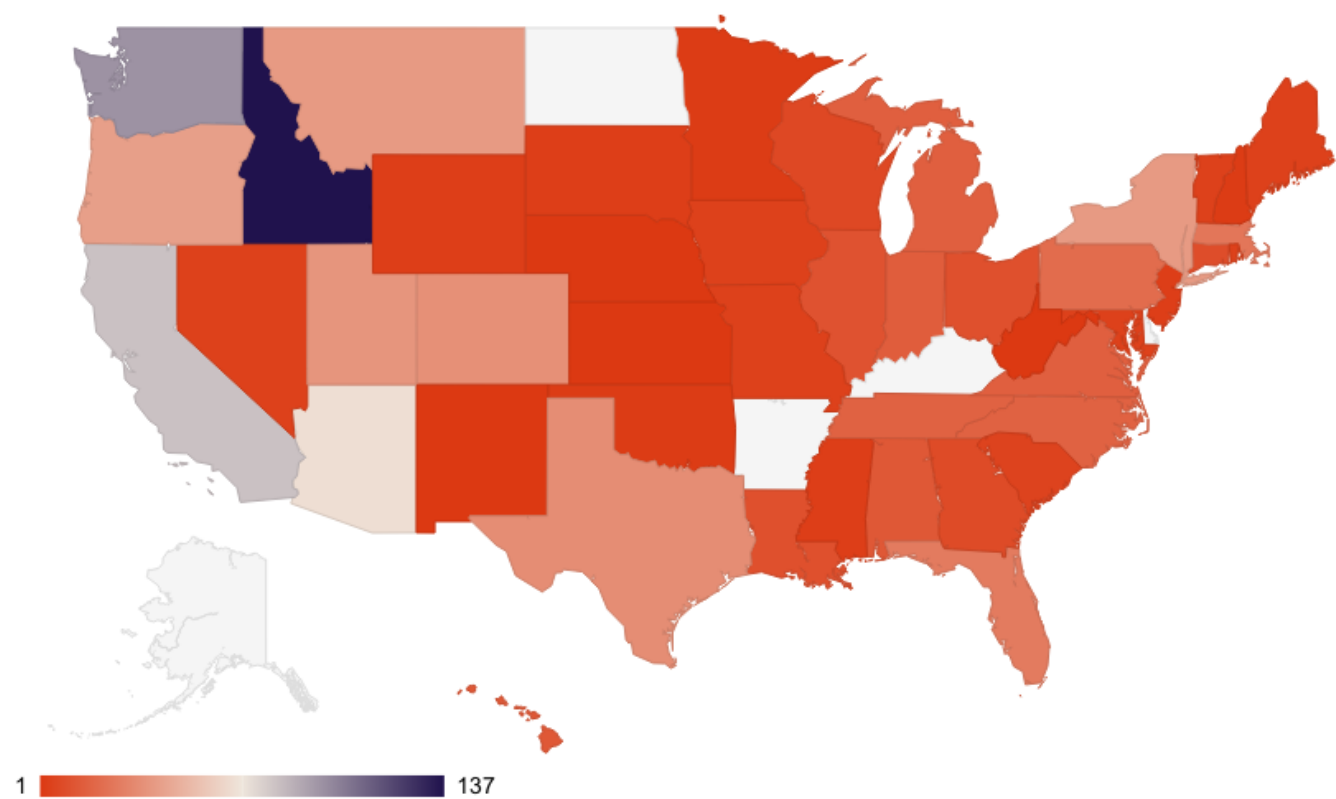
# Memorandum

**To:** Board of Trustees, Coeur d'Alene Public Schools  
**From:** Dr. Shon Hocker, Superintendent  
Dr. Mike Nelson, Deputy Superintendent  
Mr. Trent Derrick, Assistant Superintendent of Secondary Education  
**Date:** June 9, 2023  
**Re:** About the Class of 2023

The infographic represents the college applications sent and awards received by the district's class of 2023:



Additionally, please find an interactive map of applications by state by clicking on the graphic below:



You'll see additional spread of these data on our social media sites in the coming days.

## 2022-2023 SY - ELEMENTARY ENROLLMENT NUMBERS

6.9.2023

	Pre School	K 23			1 23			2 26			3 26			4 30			5 30				TOTAL	6.9.2022 Enrollment	6.10.2021 Enrollment
113 NW Expedition Life-Skills 18 Sections		22	21		21	21		22	22		28	25		25	23		29	28		NExA	418	484	405
		21			20			20			24			23			23						
		Total 64			Total 62			Total 64			Total 77			Total 71			Total 80						
105 ATLAS 18 Sections		24	23		21	20		24	24		27	24		29	8		19	30		Atlas	441	441	391
		22			20	20		24			12	13		28			29						
		Total 69			Total 81			Total 72			Total 63			Total 78			Total 78						
110 SKYWAY Extended Resource 24 Sections		22	21		23	23		26	26		25	24		31	30		28	28		Skyway	593	622	507
		21	21		22	22		26	26		23	21		30	16		9	27					
		Total 85			Total 112			Total 104			Total 93			Total 107			Total 92						
106 RAMSEY Extended Resource 21 Sections		22	22		20	19		25	24		27	27		25	25		29	23		Ramsey	482	516	465
		20			18	18		24			26			23	22		23	20					
		Total 64			Total 75			Total 73			Total 80			Total 95			Total 95						
109 HAYDEN MEADOWS 20 Sections		24	24		26	25		27	26		26	25		28	27		31	29		HM	516	473	392
		23	22		24			26		7	16	25		27			28						
		Total 93			Total 75			Total 86			Total 92			Total 82			Total 88						
103 DALTON 15 Sections		25	24		22	22		27	27		26	26		29	29		30	29		Dalton	393	390	355
					21					13	14				11		18						
		Total 49			Total 65			Total 67			Total 66			Total 69			Total 77						
101 BORAH 14 Sections Pre-School Kinder Plus		16	15		23	21		20	19		24	22		25	24		22	19		Borah	305	313	277
		15			21					12	7												
		Total 46			Total 65			Total 51			Total 53			Total 49			Total 41						
102 BRYAN 13 Sections		22	21		22	21		21	20		28	27		26	24		26	24		Bryan	301	313	320
								19															
		Total 43			Total 43			Total 60			Total 55			Total 50			Total 50						
104 FERNAN 14 Sections Life-Skills		22	21		23	20		25	22		23	21		27	26		28			Fernan	329	341	331
				11	10					15	10				8		17						
		Total 54			Total 53			Total 62			Total 54			Total 61			Total 45						
107 SORENSEN 12 Sections		23	23		23	23		26	26		26	26		28	28		30	29		Sorensen	311	314	296
		Total 46			Total 46			Total 52			Total 52			Total 56			Total 59						
108 WINTON 17 Sections Pathways		19	18		24	23		25	24		24	23		26	24		31	30		Winton	407	393	340
		17			23			24			23						29						
		Total 54			Total 70			Total 73			Total 70			Total 50			Total 90						
781 CDA Virtual Academy (CDVA) 2 Sections								3			8			8			5			CDVA	27		
		Total 3			Total 9			Total 8			Total 7												
1114 EARLY LEARNING CENTER	79																			Enrollment Including Pre-School	4598	4600	4079
<b>TOTAL</b>	<b>75</b>	<b>667</b>			<b>747</b>			<b>764</b>			<b>755</b>			<b>768</b>			<b>795</b>				<b>4523</b>		

Classes over CAP

Teacher, no  
studentsStudents, no  
teacher

Title

TOTAL  
SECTIONSCDVA  
SectionsDecrease of  
6.9.2022Increase of  
6.10.2021Total Sections/Grade  
Avg Class size/Grade30.5  
21.8734.5  
21.6532  
23.8830.5  
24.7529.5  
26.0329  
27.41

186

2  
13.50

2022-2023 SY - SECONDARY ENROLLMENT NUMBERS							6.9.2023			
	6	7	8	9	10	11	12	TOTAL	6.9.2022 Enrollment	6.10.2021 Enrollment
CMS	237	238	267					742	753	720
Total	237	238	267							
LMMS	193	203	191					587	628	596
Total	193	203	191							
WMS	239	281	286					806	891	772
Total	239	281	286							
CHS				390	403	334	339	1466	1536	1324
Total				390	403	334	339			
LCHS				422	373	345	343	1483	1499	1407
Total				422	373	345	343			
VHS				37	49	56	28	170	165	148
CDA Virtual Academy (CDVA)	11	15	23	21	34			104		
Total	11	15	23	21	34					
JDC*	1	0	5	8	8	3	1	26	18	15
TOTAL	670	722	749	857	833	738	711	5384	5490	4982
	Online enrolled not yet in Skyward			Total enrollment by grade/school					Decrease of 106	Increase of 402
									6.9.2022	6.10.2021

\* Students at JDC come from all schools within Kootenai County (CDA, Post Falls, Lakeland, Kootenai) and are enrolled in CDA School District while at JDC.